

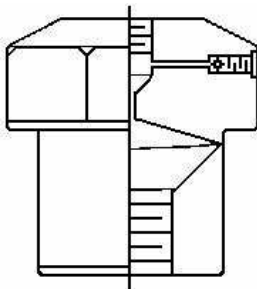
MINI DIAPHRAGM SEALS

All welded design, Standard pressure rating: 2500 PSI (6000 PSI rated available). Female threaded standard (Male process connection threaded available)

M3500 SERIES

1 1/2" Dial through 3 1/2" Dial sizes
Pressure transducers and transmitters
or other small displacement instruments.
For Pressures 60 psi Through 2500 PSI

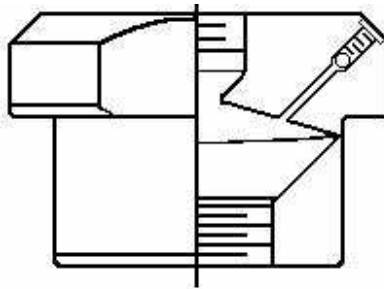
DS-M35



M4500 SERIES

All Gauges through 4 1/2" Dial Size
Pressure Transducers and Transmitters
Most Pressure Switches
or other small to medium displacement
instruments
30 PSI Through 2500 PSI

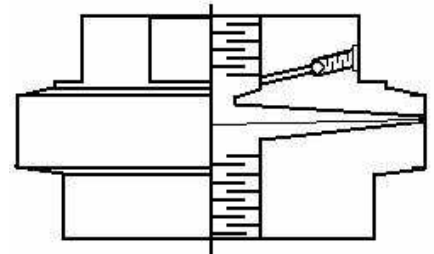
DS-M45



M3500-LP SERIES

1 1/2" Dial through 3 1/2" Dial sizes
Pressure transducers and transmitters
or other small displacement instruments.
For Vacuum or Pressures up to 2500 PSI

DS-M35 (LP)



Model Numbers:

DS-

Model Number:

M35 M3500 SERIES
M45 M4500 SERIES

Instrument Connection

1 = 1/4" FNPT
2 = 1/2" FNPT

Process Connection

1 = 1/4" FNPT
2 = 1/2" FNPT
3 = 3/4" FNPT
4 = 1" FNPT

Material of Conts.

316 = 316SS
HTC = Hastalloy 'C'
MNL = Monel
TAN = Tantalum
316L = 316L

Flushing Connection

0 = No Flushing Connection
F = with Flushing Connection
HP = High Pressure Seal
LP = Low Pressure Seal

Standard Fills (Others available by request):

Fill	Temp Range	Fill	Temp Range
Pure Glycerine (Food Grade)	+30 to + 300°F	Mineral Oil	Information TBA
Silicone DC200-1000cs	- 35 to + 450°F	Fluorolube FS-5	- 40 to + 500°F
Silicone DC 550	- 40 to + 600°F	Halocarbon Oil 63	- 40 to + 400°F
Ethylene Glycol (Anti-Freeze)	- 30 to + 300°F	Syltherm 800	- 40 to + 450°F

Series 'DS-M35'

The Series 'DS-M35' are designed for gauges 1.5" to 4" in size also acceptable for pressure transducer/transmitters or other small displacement instruments.

Standard Material of Construction: All 316 Stainless Steel (Others Available)

Standard Pressure Rating is 2500 PSI - Optional 6000 PSI rating available.

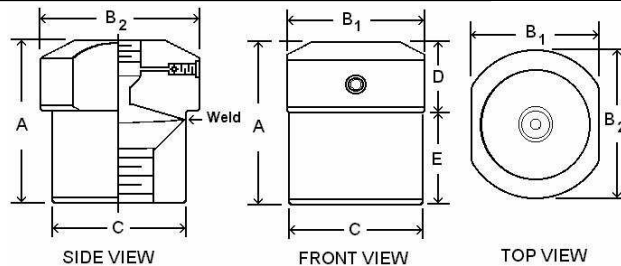
Specify thread sizes and types for instrument and process connection.

Specify types of materials for upper and lower housings and diaphragm.

Available with or without Flushing Connection.



Dim	Inches	mm
A	1.49	38.0
B1	1.52	38.6
B2	1.74	44.2
C	1.46	37.2
D	.62	15.6
E	.88	22.4



Series 'DS-M45'

The Series 'DS-M45' are designed for gauges 1.5" to 6" in size also acceptable for pressure transducer/transmitters or other small displacement instruments.

Standard Material of Construction: All 316 Stainless Steel (Others Available)

Standard Pressure Rating is 2500 PSI - Optional 6000 PSI rating available.

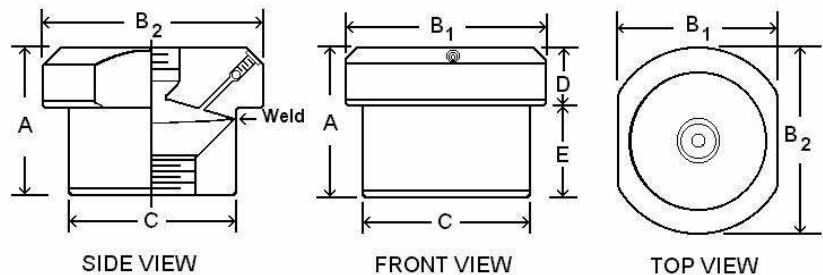
Specify thread sizes and types for instrument and process connection.

Specify types of materials for upper and lower housings and diaphragm.

Available with or without Flushing Connection.



Dim	Inches	mm
A	1.5"	38
B1	2.25"	57
B2	2.49"	63
C	1.89"	48
D	.64"	16
E	.86"	22



Series 'DS-MLP' Low Pressure Mini-seal

The Series 'DS-MLP' are designed for gauges 1.5" to 6" in low pressure and vacuum ranges. They are also acceptable for pressure transducer/transmitters or other small to medium displacement instruments.

Standard Material of Construction: All 316 Stainless Steel (Others Available)

Standard Pressure Rating is 2500 PSI - Optional 6000 PSI rating available.

Specify thread sizes and types for instrument and process connection.

Specify types of materials for upper and lower housings and diaphragm.

Available with or without Flushing Connection.



Dim	Inches	mm
A	2.48	63
B1	1.70	43
B2	1.86	47
C	1.76	45
D1	1.51	38
D2		

