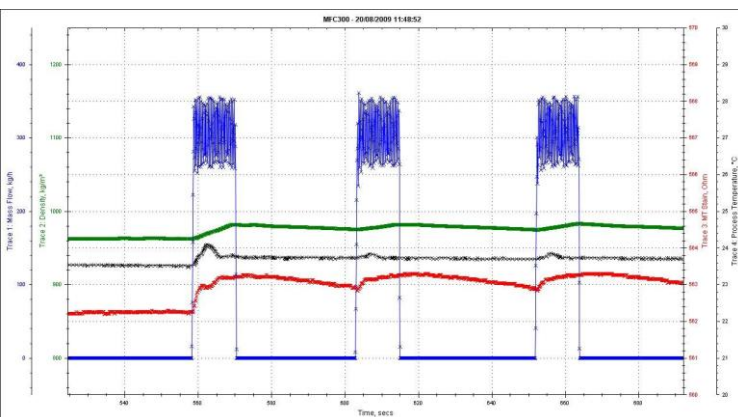


KROHNE's xFC300 Toolbox allows you to analyse your process and record your findings, without interfering with the measurement or performance of the meter.

The data logger works in two ways:

- Record directly to a PC via the USB-GDC Adaptor.
(Part No.XE52120100)
- Record to a micro-SD memory card via a plug in module.
(Part No. XE52120500)



The recorded data can be presented in a graph format using your chosen parameters.

Process data can then be analysed and any changes easily identified.

Recording directly to a PC



Direct connection with USB-GDC adaptor.



Direct connection with USB-GDC adaptor & IR interface.

- Uses USB-GDC adapter.
- Possible to use IR-interface.
- Up to 4 measurement and / or diagnostic values may be displayed on a graph simultaneously.
- All the measurement and diagnostic values are saved in the background.
- All values can be exported into an Excel file for further process analysis and diagnosis.

Recording to a memory card

- Module can be plugged into the GDC port on the xFC display behind the lid and can be set to log data for several hours or days as required.
- Allows data logging in an Ex environment.
- The data logger module captures approx. 8MB of data per hour, onto a micro-SD card (max. supported SD card size: 2GB)
- Allows unlimited data logging until the anomaly occurs.
 - » *Can be used for an unlimited time*
 - » *Data is continuously overwritten in a loop, meaning old data gets deleted and replaced by new data.*
- All measurement and diagnostic values can be saved and analysed off-line at a later date.



xFC300 Download Tool

- Downloads factory configuration file to converter.
- » Includes user settings and calibration settings.
- Requires .bin files, obtained from:
 - » KROHNE P.I.C.K website
 - » Production factory
- Hardware required:
 - » USB-GDC Adapter

Compatibility

The xFC300 Toolbox V1.0.3 supports the following converter electronics from KROHNE:

- IFC100 (CG10)
- IFC300 (CG30)
- MFC300 (CG32)
- UFC300 (CG34)



KROHNE – Local support from a global partner



KROHNE LTD

34-38 Rutherford Drive
Park Farm Industrial Estate
Wellingborough
Northants
NN8 6AE
UK

Tel: +44 (0) 1933 408585
Fax: +44 (0) 1933 408589
Email: info@krohne.co.uk
Web: www.krohne.com

KROHNE's xFC300 Toolbox software (supplied on CD), can be ordered by contacting Product Management, using the above details and quoting Part No. XE52120600



KROHNE

► achieve more

► Take a peek inside your process...

xFC300 Toolbox

A Hardware and Software tool for the GDC-based electronics from KROHNE

- Data recording
- Verification of correct sensor performance
- Analysis of process
- Configuration of factory settings.